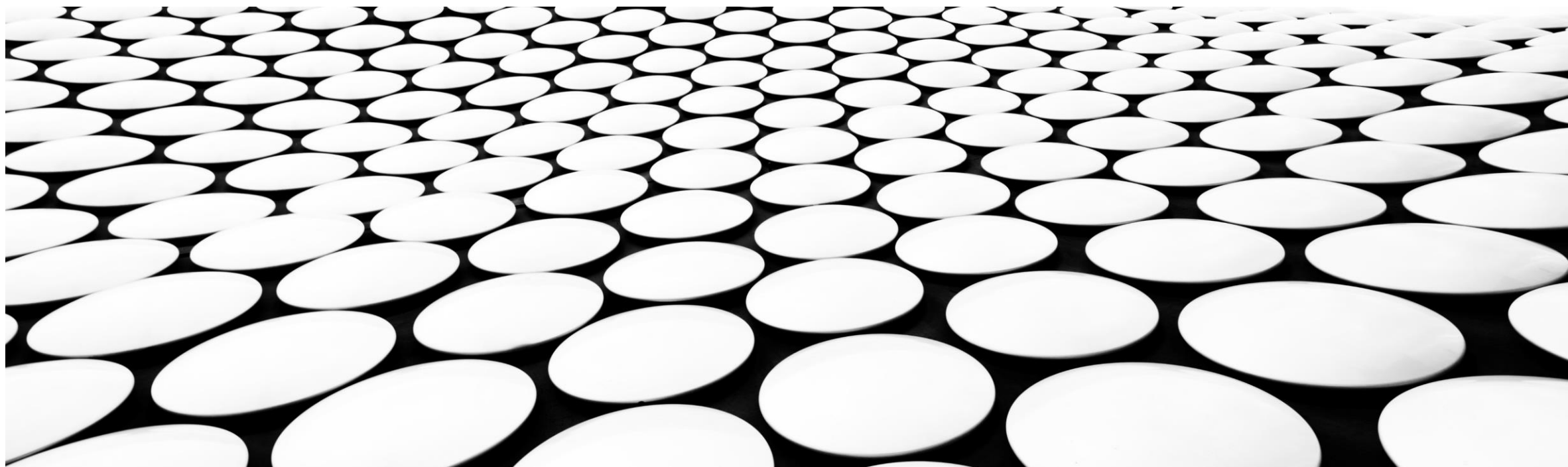
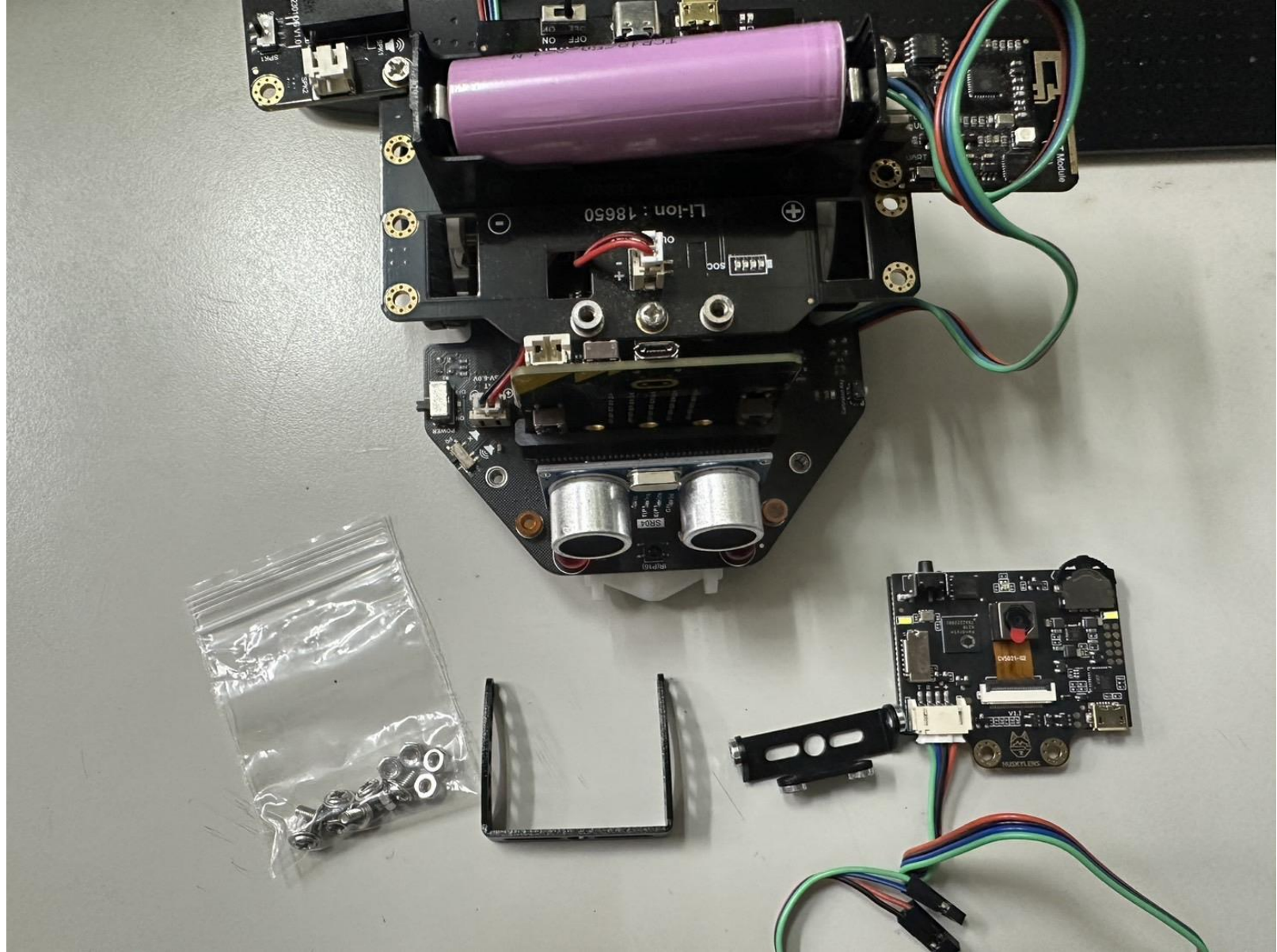

麥昆PLUS V2 與 HUSKYLENS PRO版如何組裝與接線

宇宙機器人企業有限公司 KODOROBOT



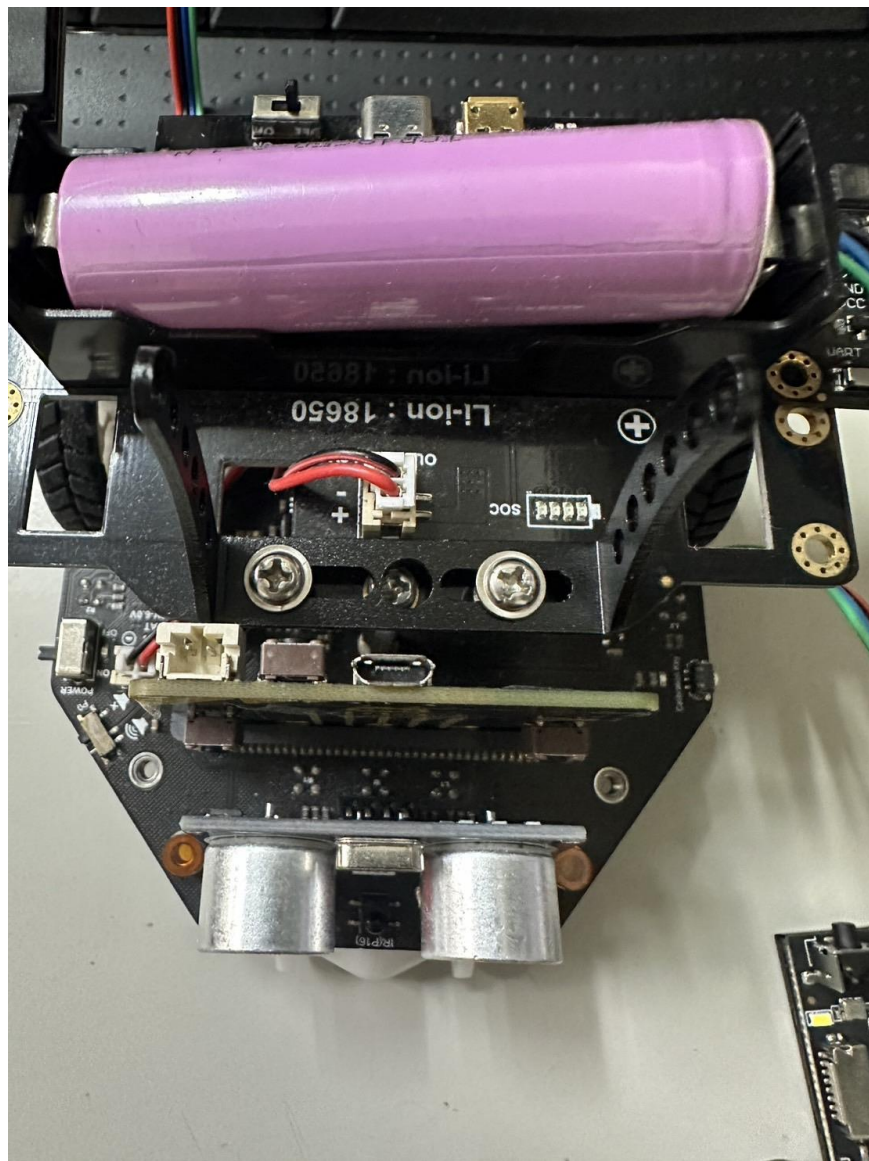
取出所有要得零件



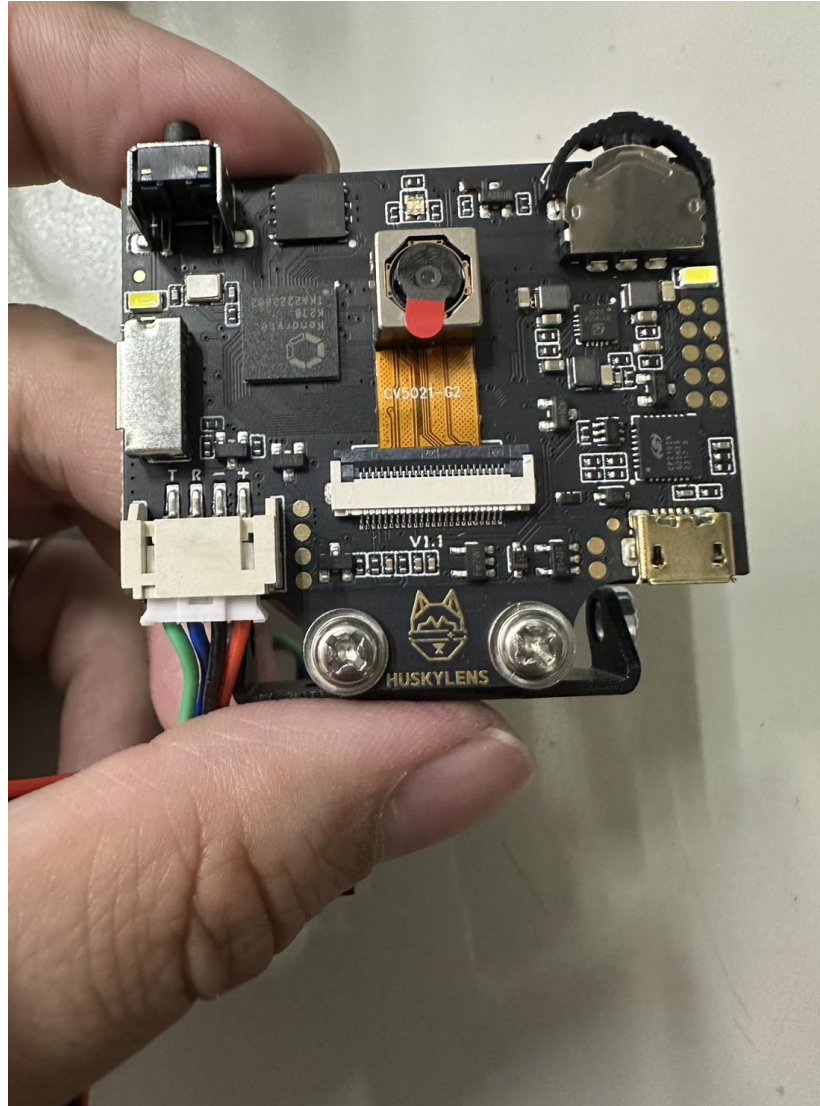
取出U型鋁架與2顆螺絲(都在HUSKYLENS PRO的盒內)



將U型鋁架與2顆螺絲鎖上麥昆PLUS的孔內



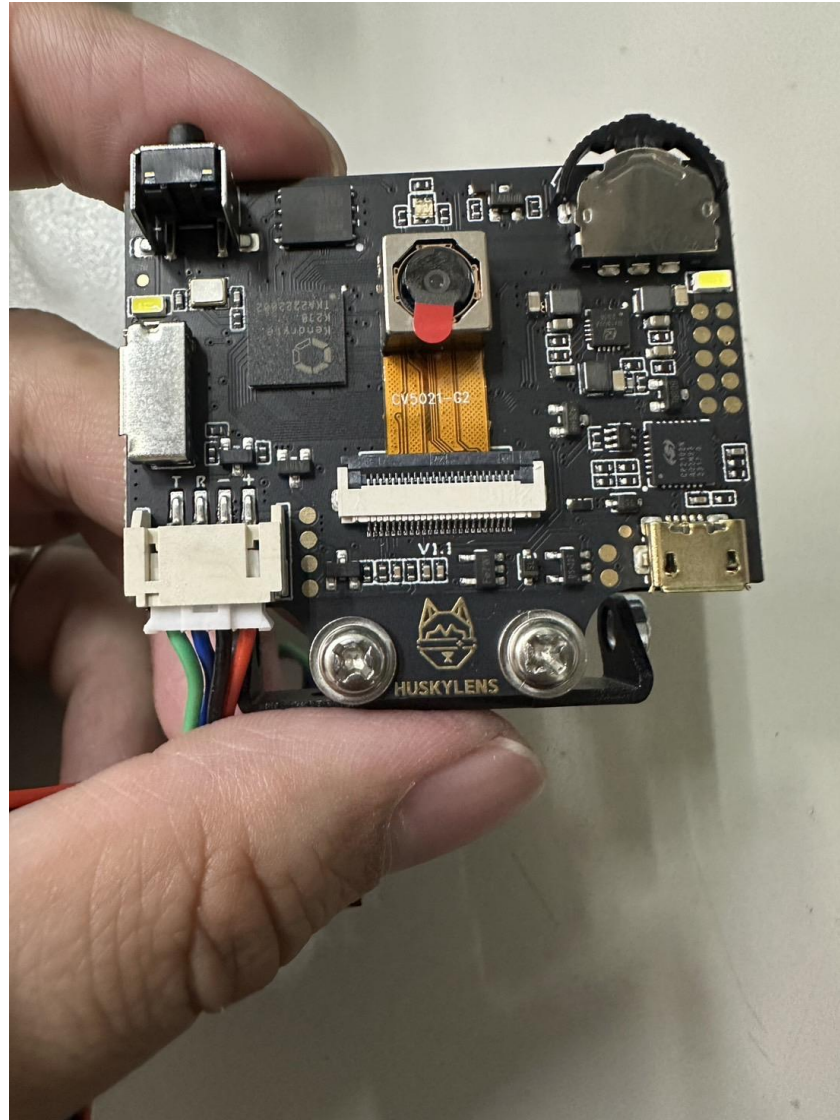
取出HUSKYLENS PRO鏡頭與2顆螺絲並放上



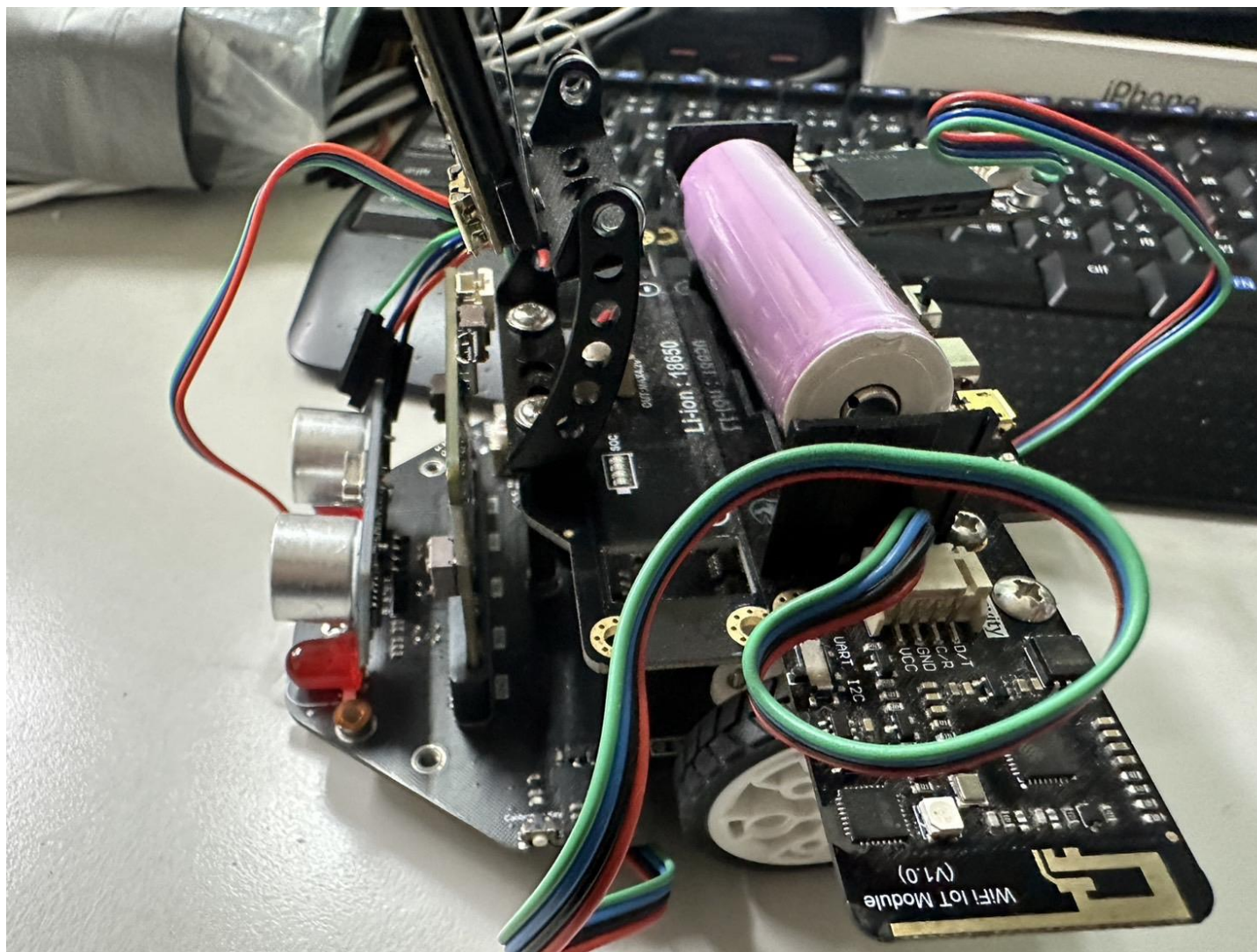
取出HUSKYLENS PRO的一字型鋁架(上方的螺絲孔有銀色的螺紋)



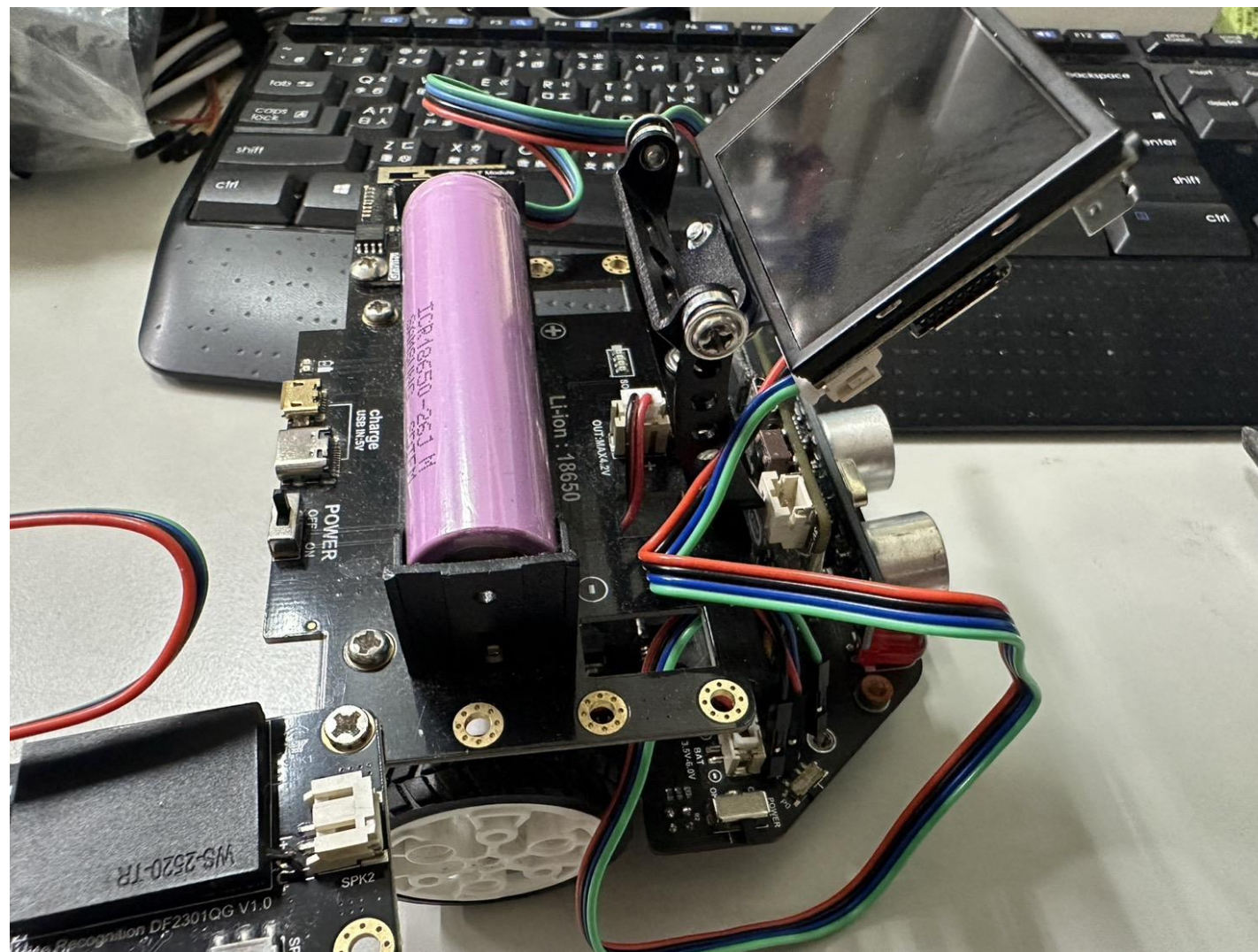
將HUSKYLENS PRO的鏡頭與一字鋁架鎖上,鏡頭的螺絲朝一字鋁架的銀色螺紋鎖上



將HUSKYLENS PRO的鏡頭組與車體上的U型鋁架卡上(需要稍微撐一下架子)



將HUSKYLENS PRO的鏡頭組與車體上的U型鋁架用2顆螺絲鎖上並自己調整鏡頭的角度



將HUSKYLENS PRO的鏡頭組的線接上麥昆PLUS的車體

